

**Double Spiral Mortar Beater 1211** € 14.86



**Kubala®**

To mix adhesives and acrylic finishes  
diameter 120 mm, length 600 mm,

threaded M-14 ending

**Construction Container 1508** € 13.48

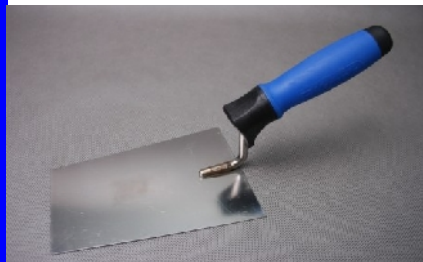


**Kubala®**

Used for mixing adhesives.  
Made of plastic

90 l volume.

**Stainless Trapezoid Trowel 0812** € 6.36



**Kubala®**

Used to apply adhesive on eps boards  
Made of stainless steel, 1,0 mm thick  
Two component plastic handgrip (G-10)

115x160x90 mm

**Abrasive Float 'Raps' type 0335** € 6.72

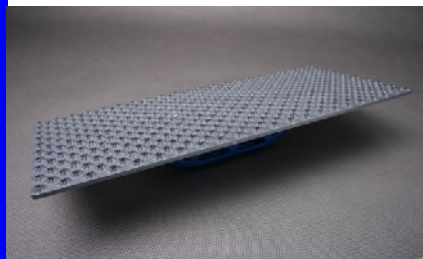


**Kubala®**

To smooth Polystyrene boards  
Made of PS, perforated tinplate pad  
during insulation of walls

130x270 mm

**Abrasive Float 0341** € 5.64

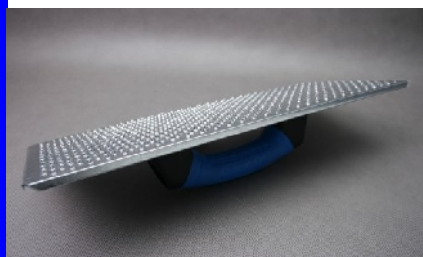


**Kubala®**

Made of PS, perforated tinplate pad  
To smooth basecoat and insulation boards  
handgrip G-16 [/registered pattern/](#)

165x385 mm

**Abrasive float Raps-type 0342** € 9.60



**Kubala®**

To smooth basecoat and insulation boards  
Made of PS, perforated steel pad  
handgrip G-16 [/registered pattern/](#)

160x380 mm

**Smooth Stainless  
Float 2521**

€ 5.92



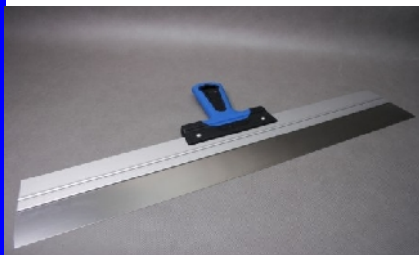
**Kubala®**

To apply base coats on EPS boards  
Made of stainless steel, 0,65 thick  
Plastic handgrip on aluminium foot

130 x 270 mm

**Stainless Stripping  
Knife 0535**

€ 13.76



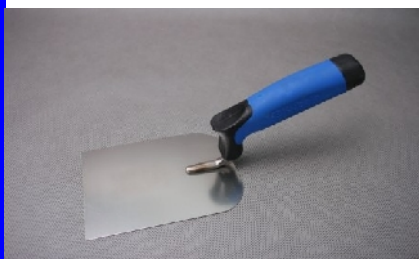
**Kubala®**

For levelling base coat plaster 2-4 mm  
Made of stainless steel, 0.45 mm thick  
Plastic handgrip two component

Width: 600 mm

**Stucco Trowel 0945**

€ 5.42



**Kubala®**

For acrylic plaster  
Of stainless steel, 0.8 mm thick  
Two component plastic handgrip (G-9)

Width 100 mm

**Professional Float  
0220**

€ 10.46



**Kubala®**

To apply acrylic finish coats  
Made of stainless steel, 0.65 mm thick,  
Two component plastic handgrip (G-3),

130 x 270 mm

**Plastic Float, smooth  
one 0375**

€ 5.22



**Kubala®**

For surfacing acrylic finish coat  
Made of ABS, plate 3 mm thick,  
Two component plastic handgrip on the foot,

130x270 mm

**Stainless stucco  
angular trowel 0939**

€ 5.22



**Kubala®**

To perform precise base coats in corners  
inner with 2 component handle G-5  
Two component plastic handgrip on the foot,

60x85 mm

## Steel Knife

€ 5.16

# GERTU



Made of steel  
Professional Knife for cutting glass fibre mesh  
and EPS boards

## Aluminium Knife

€ 4.60

# GERTU



Made of aluminium  
Professional Knife for cutting glass fibre mesh

## UV Resistant Blue Paper Masking Tape

€ 3.00

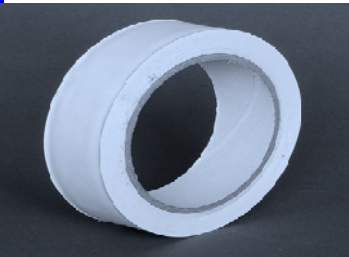


30 days protection during plastering  
and painting for internal and external use  
24 items per box

38mm x 30m

## UV and Water Resistant PVC Tape

€ 3.00



60 days protection during plastering  
24 items per box  
Recommended for glass  
and aluminium powder coated surfaces.  
25mm x 50m

## Duct Tape

€ 7.00



protection during plastering  
50mm x 50m  
24 items per box  
Sticks to almost any dry, grease free surface.  
Recommended for stone and concrete surfaces

## Self-adhesive Foil

€ 33.90



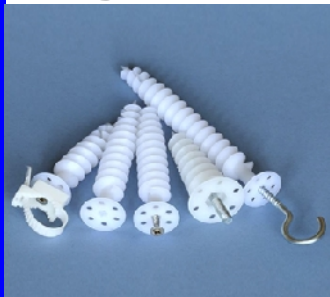
Self-adhesive uv resistant foil recommended  
for glass protection during external plastering  
600mm x 100m

it costs app. only € 13.50 per house

60 sqm per roll

### Spiral Installation Fixings

€ 49.00



see  
brochure

For fastening of low loads in insulation boards  
~ down pipes  
~ motion detectors,  
~ lights  
~ signs.  
55mm (50 items per box)

50mm fixing = 4kg !!! (applies to tensile force)

### Hot wire machine Type HW - 1200

€ 559.00



For cutting EPS insulation boards  
max cutting height 1200mm  
max cutting depth 200mm  
Voltage 110V

€ 95.00 plywood box

saves time and waste,  
eps beads travel for miles  
and causes hassle with neighbours !!!

### Gloves acrylic

€ 1.00



Gloves for protection when applying  
EWIS base coats and finishes.

pack of 12

### Gloves

€ 1.00

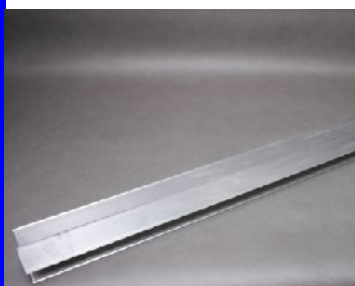


Gloves for protection when applying  
EWIS base coats and finishes.

pack of 12

### Derby "Type h" 200cm 1310

€ 35.52



**Kubala®**

Used during plaster work to remove  
excessive mortar from plaster  
Made of aluminium  
h type  
Very light

2m long



**Stainless Float  
0250**

€ 14.46

**Kubala®**



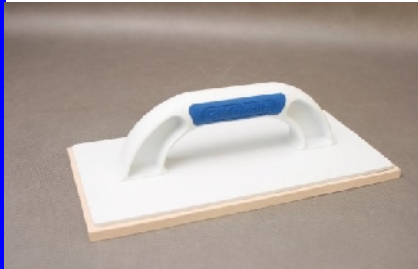
Used to to apply base coats  
Made of stainless steel, 0.65 mm thick  
Two component plastic handgrip (G-12)

130x500 mm

**Plastic float with  
rubber 0383**

€ 5.12

**Kubala®**



For finishing sand and cement plaster  
Made of PS, rubber 8 mm thick  
Two component plastic handgrip (G-12)

140x280 mm

**Plastic float with  
rubber sponge 0395**

€ 9.84

**Kubala®**



For skim coats.  
Made of PS, rubber sponge 20 mm thick  
Two component (G-16) plastic handgrip  
To float wet inert gypsum  
140x280 mm

**Derby Float 1306**

€ 34.88

**Kubala®**



For sand and cement , monacouche plaster  
Made of aluminium  
Used during plaster work to remove excessive  
mortar from plaster  
length: 2000 mm

**Abrasive Float  
'Raps'-type 0338**

€ 13.60

**Kubala®**

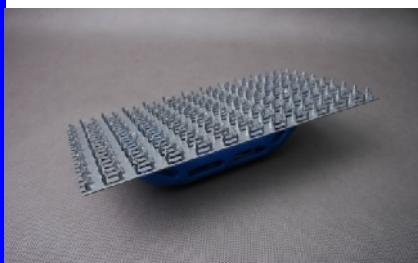


For corners **600mm long**  
Made of PS, perforated tinplate pad  
To strip and smooth Polystyrene plates during  
insulation of walls  
130x600 mm

**Plaster Scrubber  
1418**

€ 6.72

**Kubala®**



To scrub out plaster  
Plastic handgrip  
Zinc coated sheet with scrubbers

130x250 mm

**for monacouche plaster**